



LPA Kindergarten
Round Up



Mission and Vision of LPA



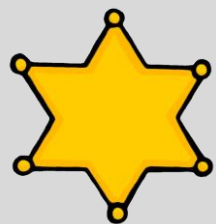
- The mission of LPA is “everyone is respectful, responsible, ready to learn, and focused on creating positive relationships.”
- The vision at LPA is to ensure high levels of learning and expectations for all students and staff. Through our continuous collaborative efforts, students will have character, knowledge, and skills essential to pursuing their goals and dreams successfully throughout their lives.



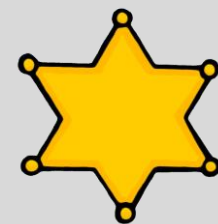
MR. HOESSLER – LPA PRINCIPAL

**MRS. STANTON –
KINDERGARTEN ASSISTANT
PRINCIPAL**

**MRS. SULLENS – KINDERGARTEN
COUNSELOR**



Admin and Support Staff



Meet your amazing LPA Kinder Crew!

MRS. RHODUS



MS. GALAT



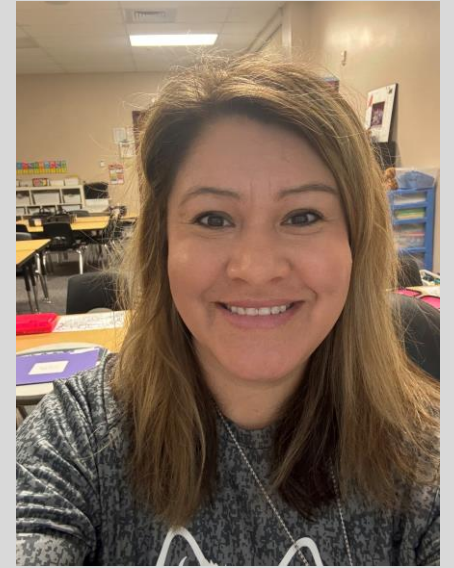
MS. PERYAM



MRS. MJ



MRS. SCIARRATTA



MRS. MARTIN



MRS. PALLAI



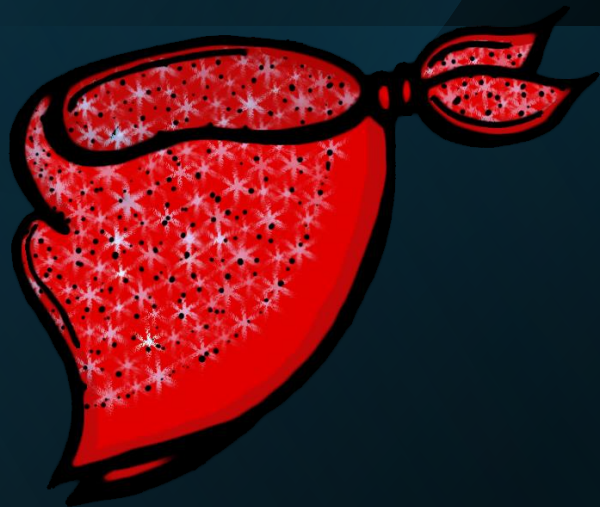
MRS. RYAN



MRS. RANDLE - HAYES

This isn't our first rodeo!
Together we have 147 years experience teaching!

Beginning of the Year Kindergarten Expectations:



Literacy: Recognizing letters, saying the alphabet, understanding basic concepts like front/back of a book, listening to stories, and identifying and attempting to write their name correctly.

Math: Counting to 10 (or higher), identifying basic shapes, counting objects 1-1, and sorting objects (by color, shape, size etc.)

Social Skills: Following classroom rules, sharing with others, taking turns, raising their hand to speak, greeting classmates and teachers.

Fine Motor Skills: Holding a pencil correctly, trying to color within lines, cutting with scissors, using manipulatives.

Self-Care: Going to the bathroom independently, dressing themselves, managing personal belongings, opening lunch items including containers and packages.

How can parents support their child before Kindergarten starts?



Reading	Letters	Math	Social Skills	Routines	Directions
<p>Reading together regularly: Expose your child to different types of books and encourage them to ask questions about the story.</p>	<p>Practice letter recognition and sounds: Play games to help your child identify letters and their corresponding sounds.</p>	<p>Develop counting skills: Incorporate counting into everyday activities like counting toys or stairs.</p>	<p>Foster social skills: Encourage sharing, taking turns, and listening to others during playtime.</p>	<p>Establish a routine: Create a consistent bedtime and wake-up time to prepare for the school day.</p>	<p>Encouraging multi step directions: Ask your child to follow multi step directions where they have to remember the tasks in order.</p>

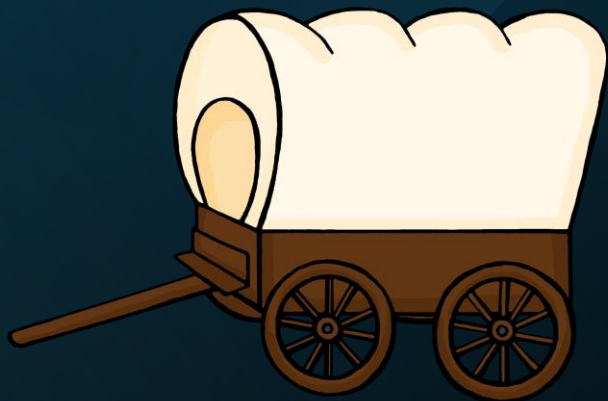
What will we
work on
during the
year -
Literacy



Academic emphasis will be on these areas of reading according to the Florida BEST standards:

- Foundational Skills (phonics, phonemic awareness, print concepts, fluency ect)
- Reading/ Informational (retelling stories, main topic, poetry)
- Communication through writing
- Vocabulary

What will we work on during the year - Math



We will focus on the Florida BEST math standards:

- Numbers and Number sense: Recognizing, writing, comparing & representing numbers to 20. Composing and decomposing numbers.
- Count to 100 by 1's and 10's
- Solving problems by counting, ordering, joining and separating numbers.
- Understand and create word problems and be able to represent them with numbers.
- Identifying, sorting, describing and manipulating two & three dimensional shapes.
- Comparing by length, height and weight.
- Understanding numbers in base ten (place value - understanding that 15 is a 10 and 5 ones)

What will we
work on
during the
year –
Science/SS



We focus on the Florida NGSS
Standards:

- Integrated throughout our ELA Block and other parts of the day
- Learning the basics of many different things from US Symbols to Gravity!
- Teaching the state required instruction (Major Holidays, events, etc)

What will we work on during the year – Social Emotional



Our school focuses on responsibility training and the character counts pillars of :

Responsibility. Trustworthiness, Respect, Caring, Citizenship, and Fairness

- Your child will be expected to follow the classroom and school rules as well as procedures.
- LPA is also a PBIS (Positive Behavior Intervention Support) school and supports students through a positive lenses looking to reward great behavior and helping students think through tough times.

What will we work on during the year - Assessments



- STAR Early Literacy and Math will be administered on a computer (usually touch screen laptops) three times a year. Students must answer independently.
- Teacher made, county approved, informal and observational assessments will be used to guide instruction

Average Daily Schedule



Arrival and unpacking

Morning News

ELA Block

Lunch

Math Block

Focus Intervention Groups

Resource

Science/Social Studies

Snack

Recess

Monthly Fun Activities

Back to School
Bootcamp

Johnny
Appleseed Day

Halloween
Parade

Field Trips
(Farm and JCA
for a play)

Fall Centers

Thanksgiving
Performance
and Luncheon

Winter Centers

Holiday Sing
Along Play

100th day of
school

Valentines Day

Liberty Parade

End of the
Year Centers

Mothers Day
Spa

Field Day

Fun Run

Kindergarten Screeners



- We will be hosting Kindergarten Screeners July 21st and 22nd at the LPA Library. A Sign-up genius will be sent out as soon as you register!
- During this time, we will assess what knowledge your child is bringing into kindergarten.
- Parents will have the opportunity to tell us about their child and sign up to be an approved volunteer.
- Attending this will help us to place your child into the best classroom for them! If you do not attend, we cannot guarantee immediate teacher placement.

What is Staggered Start?

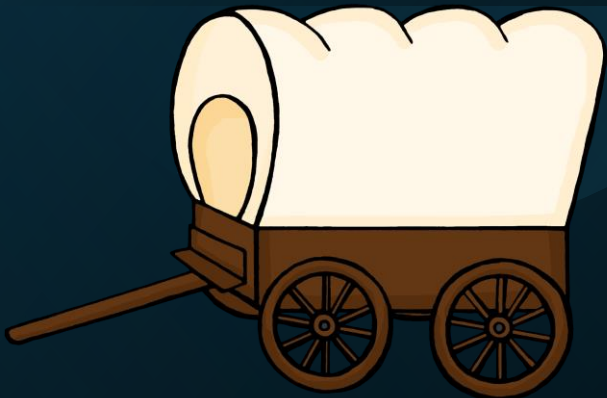


Your student will be given a stagger start date. This means that your child will only attend school on their stagger start day and Friday. This is only for the 1st week. After the first full day with all students on Friday they will come every day after as normal. Staggered days and Friday will not start until 9:00am and we will meet them in the cafeteria at 9:00am and then go to the class from there!

We do stagger start to help us get to know kids in small groups, show them around the school, and assess them.

EX: Your students Stagger Start day is Tuesday. They will not attend on Monday, will come on Tuesday, and then not come Wednesday and Thursday, but then come on Friday.

School Supplies



We highly suggest that you purchase your student supplies through the 1st Days of School website. The link will be on the LPA website! This ensures that students get exactly the supplies needed with no hassle to you! Prices are very competitive to supplies you would buy individually and include brand names. You would only need to purchase a full-sized backpack and lunchbox!



Scan the QR
code and sign
Up for
Kindergarten
Screeners

